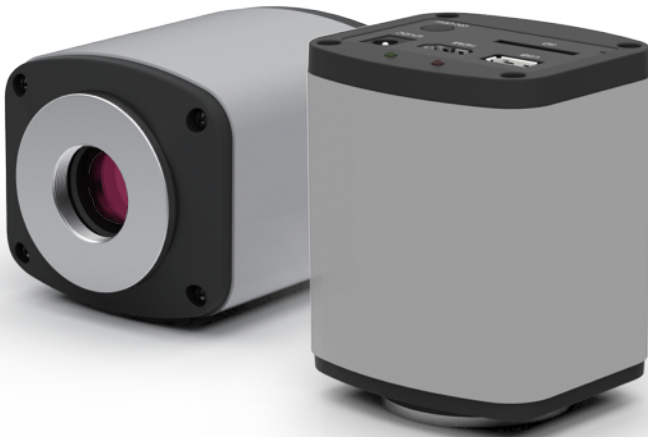


# 5MP HDMI Camera

Built-in Mouse Control Camera

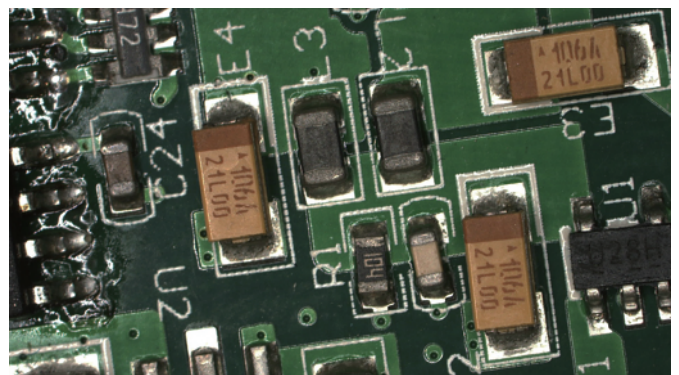
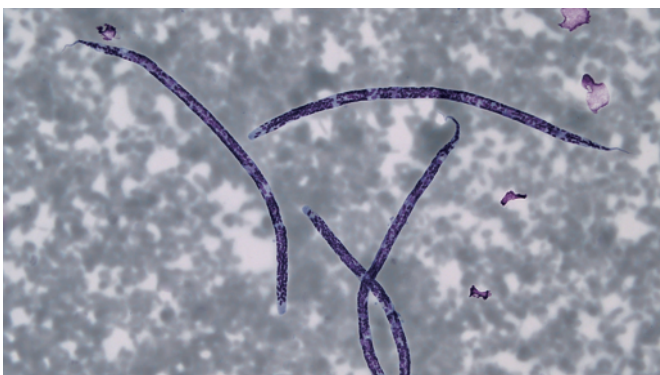


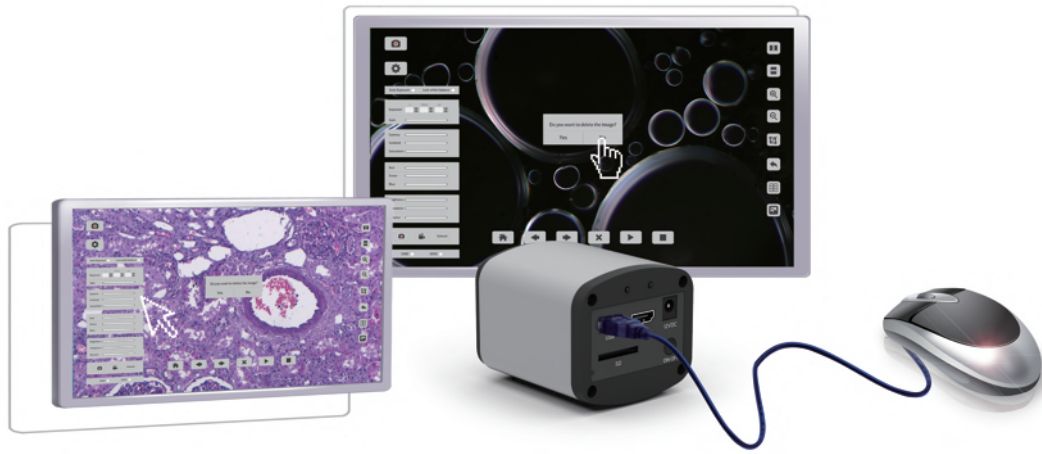
HD camera with c-mount interface that provides a full high-definition live image and a standard capture resolution of 5Mpixels.

It can connect to monitor with HDMI port directly, and user can operate it easily and capture images, record video to the SD card directly. No PC is needed.

The camera's design is so user-friendly, even a new user can operate it within seconds.

	HDMI Camera specification
Sensor	Aptina MT9P031
Sensor size	1/2.5inch
Pixel size	2.2um x 2.2um
Preview resolution	1920 x 1080
Capture resolution	2592 x 1944
Frame rate	1920 x 1080 15fps via USB2.0 1920 x 1080 15fps via HDMI
Capture	SD card(4G)
Video recording	1080p 15fps @ SD Card 1080p 15fps @ PC
Exposure time	0.001s-10s
Exposure	Automatic & Manual
White balance	Automatic
Settings	Gain, Gamma, Saturation, Contrast
Built-in software	Cloud 1.0 ver
PC software	ISCapture
Interface1	USB2.0
Interface2	HDMI
Compatible OS	xp,win7/8(32/64bit), MAC OSX
Optical port	Standard C-mount(Aluminium)
Power Supply	DC 12V /2A
Operational temperature	0-60 C
Humidity	45%-85%
Storage temperature	-20-70 C
Dimension	74.4*67.2*90.9mm
Weight	1kg





### Main Features:

1. Built-in mouse control: The user can control the camera by a mouse directly.
2. Superb Smart Camera:  
The HDMI camera can automatically analyze the acquired image, optimize the white balance and exposure time to present the perfect images.
3. Pure and gracefully image quality.
4. HDMI and USB two outputs.
5. Powerful ISCapture measurement Software when use USB output.
6. When use HDMI output:  
Directly take image & record video to SD card by a mouse directly.  
Detail parameter setting, includes Exposure, White Balance, Gain, Gamma, Contrast, Saturation, Brightness, Sharpness, Denoise, Flip, Zoom in/out and Cross function etc.  
Image Comparison function.
7. Fast Live Image.
8. Support WInxp/7/8(32/64bit), MAC OSX.
9. Standard C-mount camera and easy to connect to any microscope.
10. 2 years Warranty

### Application:

- Scientific research
- Education
- Life Science ,
- Material Science
- Industrial Detection (like PCB board and semiconductor examination)
- Medical Research

### Item Check List

- HD Camera
- HDMI Cable
- USB Cable
- 12V AC/DC Power adapter
- SD Card
- Mouse
- Application Software ISCapture
- Packing Box

